



SECURETEC

DrugWipe®

CA	BZO	CL
	AM	CL
	MET	
OP	CO	CL



PRESS



DrugWipe S

SALIVA TEST

Securetec is the global leader in the area of saliva drug tests.

Application: Roadside screening

- **Reliable:** Tamper-resistant; reliable screening results even with a dry mouth
- **Specific:** Tests for direct effects (not long-term consumption)
- **Discreet:** Non-intrusive
- **Broad acceptance:** Very high level of cooperation during sample collection
- **Hygienic:** Quick and easy sample collection



► DrugWipe S 604 G + Benzodiazepines

3-8 Min.



► DrugWipe S 505 G

Saliva test for cannabis,
amphetamines/methamphetamines,
opiates and cocaine



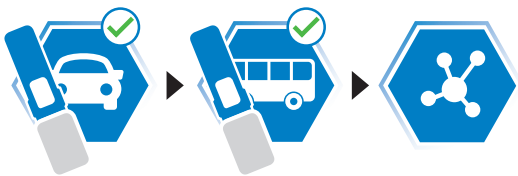
► DrugWipe S 602 G + Ketamin und PCP

References



Example AUSTRALIA

- **Background:** Drug screening with DrugWipe since 2004 – this initially began in Victoria and is now being stepped up in all states across Australia.
- **Procedure:** Roadside screening using a two-step approach



1. In-car screening with DrugWipe II TWIN

2. Screening in police bus with DrugWipe Combo

Confirmation analysis by lab

- **Experiences to date:**
 - Very high detection rates
 - Very high convergence rate with confirmation analysis in the lab (96 to 99.5%)
 - Very high acceptance of the rapid drug screening test among individuals tested (97%)
 - Very high level of cooperation among individuals tested (98%)



Pictures:
Australian campaign
for drug-free driving

DRIVER
DRUG TEST
CONDUCTED
IN VICTORIA





Example

GREAT BRITAIN

- **Background:** DrugWipe was approved by the Home Office in January 2015
- **Procedure:** DrugWipe is approved for mobile drug screening in England and Wales
- **Experiences to date:** Every second driver tested had a positive result in drug screenings undertaken in December 2015

IT'S LIKE A
BREATHALYSER
FOR DRUGS.
NO WE HAVEN'T BEEN
SMOKING SOMETHING



THE ROADSIDE SWAB IDENTIFIES
DRUG DRIVERS ON THE SPOT.

DON'T DRUG DRIVE

THINK

Pictures: THINK campaign, UK



DrugWipe A

SURFACE, SWEAT AND SALIVA TEST

Application: Customs, border control, occupational health and safety

- **One test fits all:** The right test for every situation
- **Flexible:** Tests saliva, sweat and surfaces
- **Tailor-made:** Specific testing for cases of suspected drug use



DrugWipe F

SURFACE TEST

Application: Accident and emergency situations, prison services, occupational health and safety

- **Simple:** Can be used by anyone who isn't authorized to collect physical samples
- **Discreet:** Contact-free testing
- **Reliable:** Reliable detection of invisible traces on all surfaces – even indicating past contamination



Product overview



Name		Cannabis	Cocaine
DrugWipe® 5 S	Saliva test	X	X
DrugWipe® 6 S		X	X
DrugWipe® 6 S		X	X
DrugWipe® 1 A	Surfaces/sweat/saliva	X	
DrugWipe® 1 A			X
DrugWipe® 1 A			
DrugWipe® 1 A			
DrugWipe® 2 A		X	
DrugWipe® 2 A			X
DrugWipe® 5 A		X	X
DrugWipe® 5 F	Surfaces	X	X

Securetec rapid drug screening tests – benefits at a glance



Opiate	Amphetamines/methamphetamines	Benzodiazepines	Ketamine/PCP	Part no.
X	X			S 505 G
X	X	X		S 604 G
X	X		X	S 602 G
				A 101 A
				A 102 A
X				A 103 A
	X			A 104 A
	X			A 201 A
X				A 203 A
X	X			A 501 A
X	X			F 501 A

- Pocket-sized test for mobile applications
- Quick and easy to use
- Fast confirmation of initial suspicions
- Positive indicator – red line indicates current drug use
- Highly specific antibodies guarantee reliable detection
- Sensitive – detection in the nanogram range
- Very small sample required



Securetec

The company



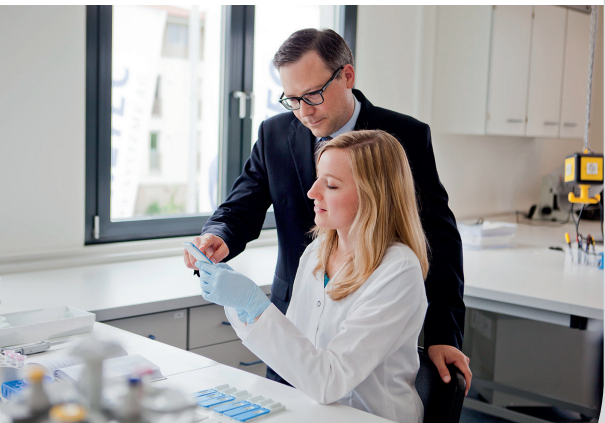
Research and Development

For over 20 years, Securetec has been successfully developing and manufacturing application-specific products in the areas of lateral flow technology, point of care and in-vitro diagnostics. All products are developed and manufactured in Germany.

We invest about 10% of revenue in research and development annually. The specialists in our R&D department are working on innovative biosensors and rapid screening tests for on-site analysis. We have expertise in the detection of tiny molecules, in particular drugs, hazardous materials and micro-organisms.

This allows us to create tailor-made rapid screening tests for our customers:

- **DrugWipe®** Rapid screening tests for detecting drug use in saliva and sweat (on skin) and on surfaces
- **DrugID®** Rapid screening tests for identifying unknown drug substances
- **DrugCon®** Rapid screening test for detecting drugs in the gas phase
- **ChE check mobile** for on-site detection of acetylcholinesterase activity in patients from whole blood
- **Sulfur Mustard Detector** for detecting mustard gas contamination on the skin





Production and Quality Control

Our company has been certified in accordance with EN ISO 13485 since 2004, and the quality of our products is of the utmost importance to us. Our quality management system is audited by TÜV Süd (Association for Technical Inspection) on an annual basis. For us, total quality management is more than just an abstract concept – it's something we live and breathe every day.



As a medium-sized company with around 1.5 million drug tests sold each year, we are one of the world's leading providers in this field. We set the benchmarks for rapid drug screening tests – as confirmed by international comparison studies and satisfied customers in more than 30 countries around the globe.

We are motivated by our desire to help keep people safe.





SECURETEC

DETEKTIONS-SYSTEME AG



Demo Video
[securetec@youtube](#)



Securetec Detektions-Systeme AG
Lilienthalstrasse 7 · 85579 Neubiberg
Germany
P +49 89 203080-1651
info@securetec.net
www.securetec.net